

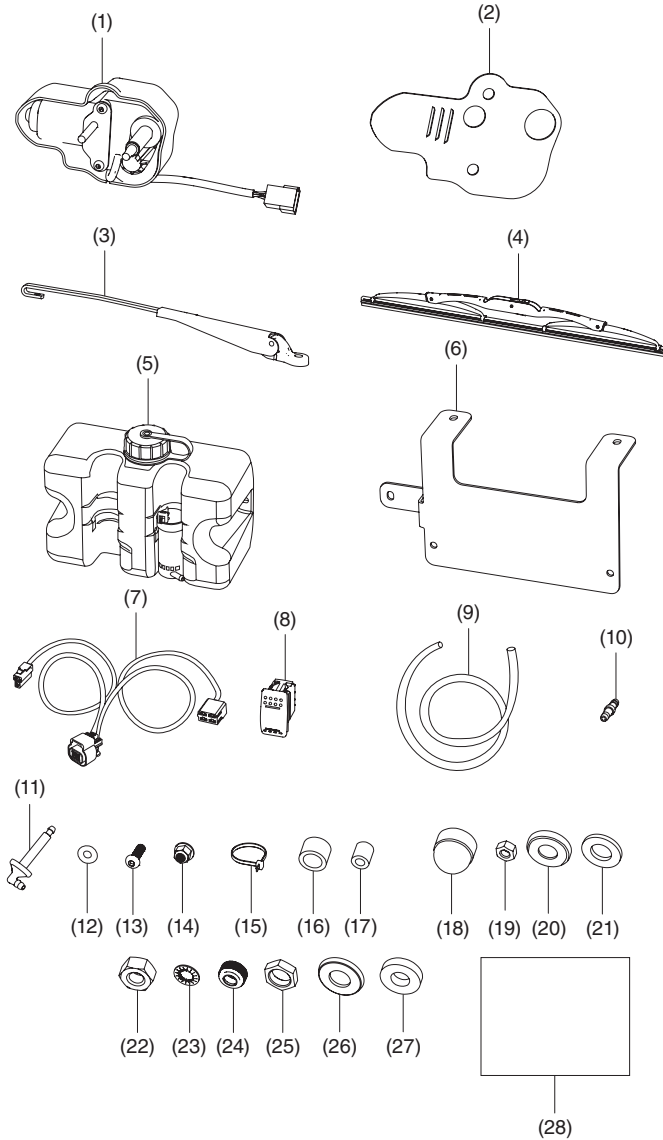


INSTALLATION INSTRUCTIONS

Accessory WINDSHIELD WIPER WASHER KIT P/N 0SE10-HL4-A00	Application SXS1000M3P/M3D/ M3DT/M3DF/M3LS/M5P/ M5D/M5DT/M5DF/M5LS	Publication No. MII 17762
		Issue Date April 2022

Honda Dealer: Please give a copy of these instructions to your customer.

PARTS LIST



No.	Description	Qty
(1)	Wiper motor	1
(2)	Wiper motor cover plate	1
(3)	Wiper arm	1
(4)	Wiper blade	1
(5)	Washer tank with pump	1
(6)	Washer tank bracket	1
(7)	Wiper/washer wiring harness	1
(8)	Switch	1
(9)	Washer hose	16 ft
(10)	Washer hose connector	1
(11)	Elbow connector	1
(12)	M4 flat washer	2
(13)	M6 x 20 mm button head screw	2
(14)	M6 flange nut	2
(15)	Cable tie	7
(16)	Large spacer	1
(17)	Small spacer	1
(18)	Stud cap	1
(19)	Stud nut	1
(20)	Small cupped washer	2
(21)	Small rubber washer	2
(22)	Small spindle nut	1
(23)	Spindle toothed washer	1
(24)	Spindle cap	1
(25)	Large spindle nut	1
(26)	Large cupped washer	2
(27)	Large rubber washer	3
(28)	Installation Instructions URL	1

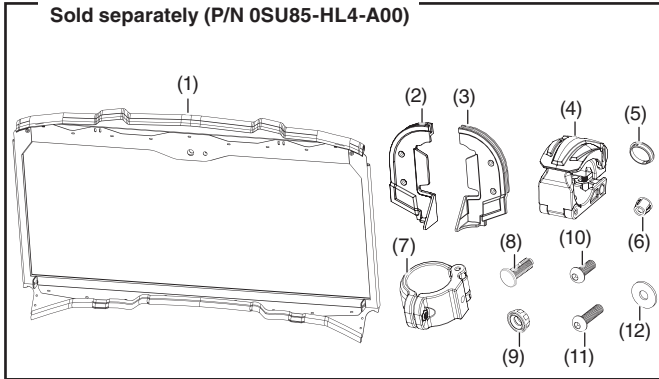
TOOLS AND SUPPLIES REQUIRED

- Wrench (13 mm and 22 mm)
- Torque wrench
- Thread lock (Loctite 242 "Blue" or equivalent)
- Ratchet
- Torx bit (T30)
- Drill with 5/8" drill bit.

REQUIRED ACCESSORIES

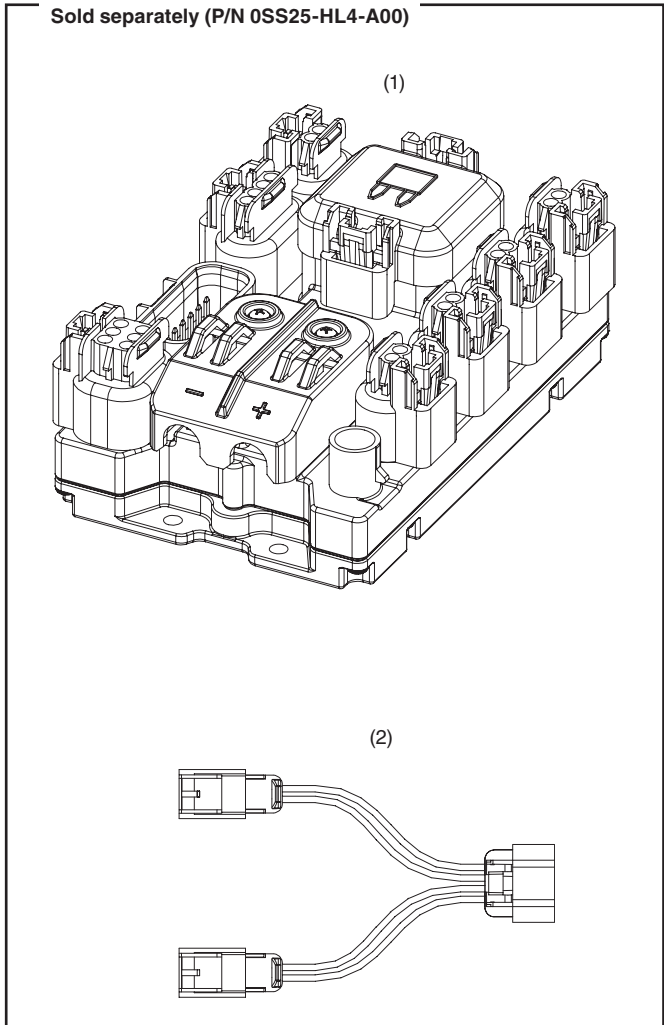
The items below are required for the installation of this accessory.

Glass Windshield Sold separately (P/N 0SU85-HL4-A00)



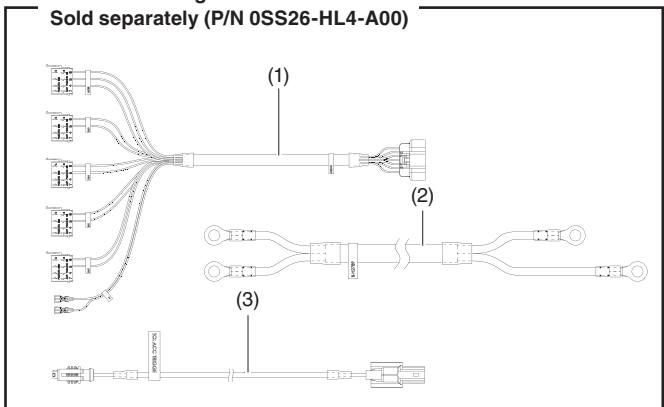
No.	Description	Qty
(1)	Glass windshield	1
(2)	Driver side corner seal	1
(3)	Passenger side corner seal	1
(4)	Cam lock clamp	2
(5)	Large plug	1
(6)	Small plug	1
(7)	Two-piece clamp	2
(8)	Push dart	4
(9)	Push nut	4
(10)	6 × 16 mm button head bolt	6
(11)	6 × 25 mm button head bolt	2
(12)	6 mm flat washer	6

Fuse Box Sold separately (P/N 0SS25-HL4-A00)



No.	Description	Qty
(1)	Fuse box switch	1
(2)	Harness, 4-pin to 2-pin (Y-splitter)	1

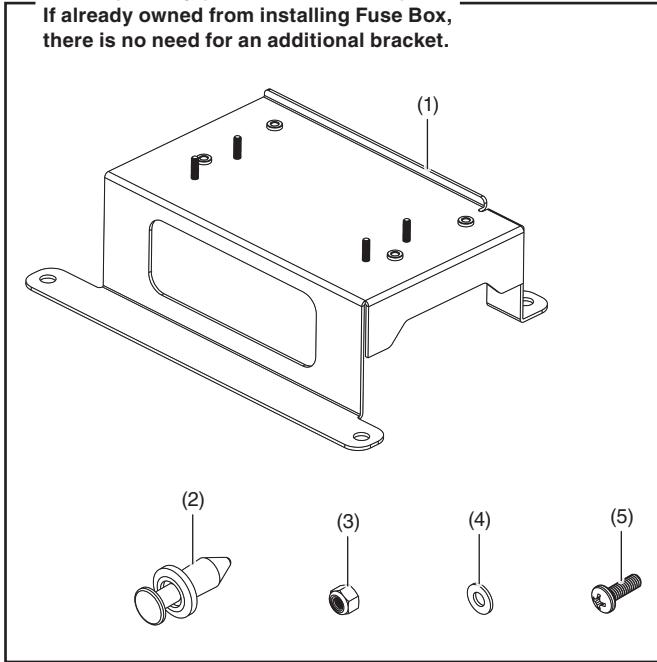
Fuse Box Wiring Kit Sold separately (P/N 0SS26-HL4-A00)



No.	Description	Qty
(1)	HL6 EVC switch wire harness	1
(2)	Power & ground input cables	1
(3)	Accessory trigger input wire	1

Fuse Box & Audio Mount Bracket
Sold separately (P/N OSS27-HL4-A00)

If already owned from installing Fuse Box, there is no need for an additional bracket.



No.	Description	Qty
(1)	Mounting plate, fuse box, HL4	1
(2)	Trim clip	4
(3)	M4 × 0.7, locking hex nut	4
(4)	M4 flat washer	8
(5)	M4 × 12 mm phillips pan-head screw	4

TORQUE CHART

Tighten all screws, bolts, and nuts to their specified tightening torque values. Refer to the Service Manual for the tightening torque values of the removed parts.

Item	N-m	kgf-m	lbf-ft
16 mm nut	4	0.41	2.95
8 mm nut	6	0.61	4.42
8 mm nut (step 15 only)	25	2.55	18

USE AND CARE INFORMATION

- Check the accessory mount frequently and retighten if necessary.
- Replace this accessory with a new one if it is damaged or discolored excessively.
- When this accessory becomes dirty, rinse it thoroughly with cool water to remove loose dirt, then wipe with a clean cloth or sponge.
- Do not use a brush to clean this accessory as it may scratch the surface.
- Never clean with or expose this accessory to petroleum solvents such as gasoline, thinner, benzine, acid, or alkaline cleaners.

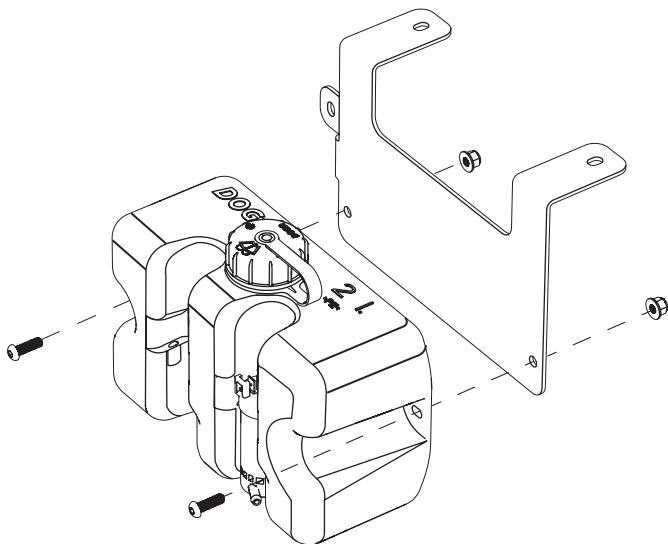
NOTE:

This accessory is not compatible with the Powered Subwoofer or the Under Seat Storage Box.

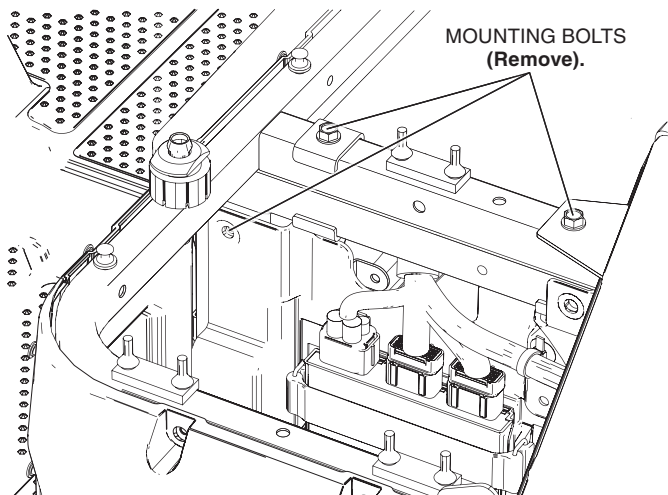
INSTALLATION

WASHER TANK INSTALLATION

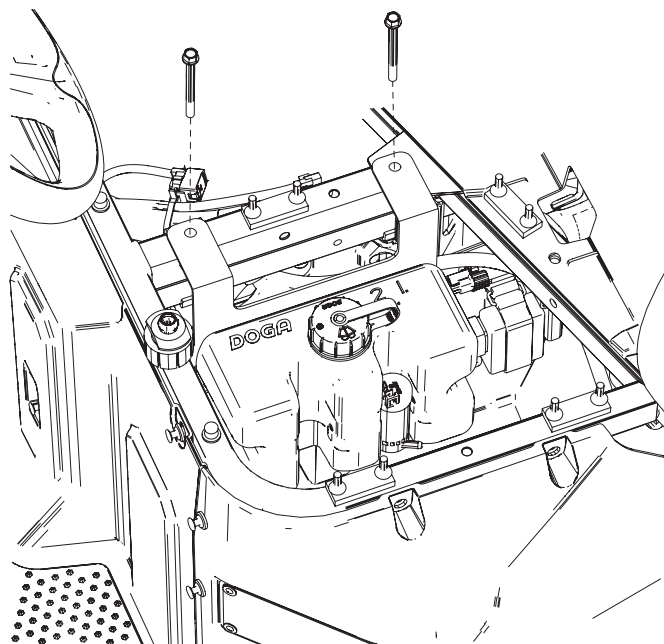
1. Install the accessories Glass Windshield, Fuse Box and Fuse Box & Audio Mount Bracket.
2. Remove the driver seat cushion to access the compartment under the driver seat.
3. Attach the washer tank to the washer tank bracket using two M6 screws and two M6 bolts as shown.



4. Remove the mounting bolts from the driver seat supports in the locations shown.

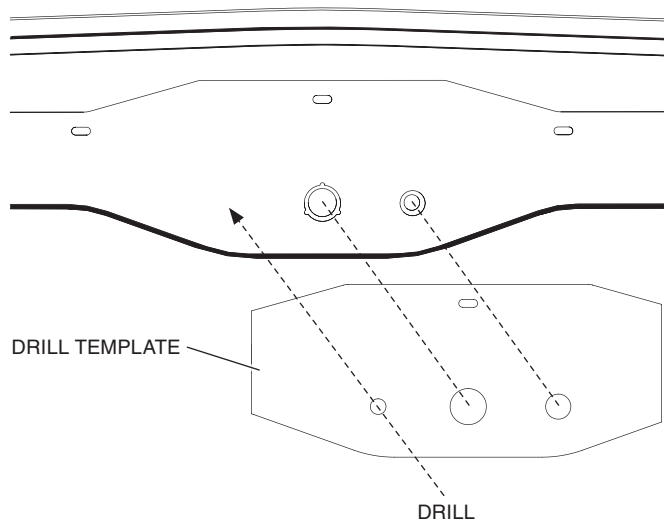


5. Place the washer tank inside the driver seat compartment and fasten the bracket to the support beam using the bolts removed in step 4.



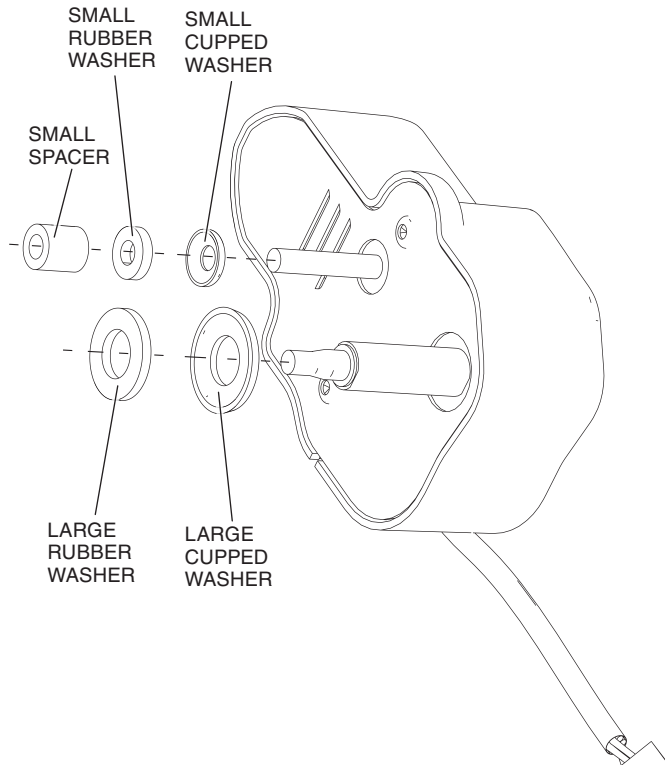
WASHER/WIPER INSTALLATION

1. Remove plugs from mounting holes in top of windshield.
 - For older models of windshield with two mounting holes, use the provided drill template to drill a third mounting hole in the windshield frame as shown.

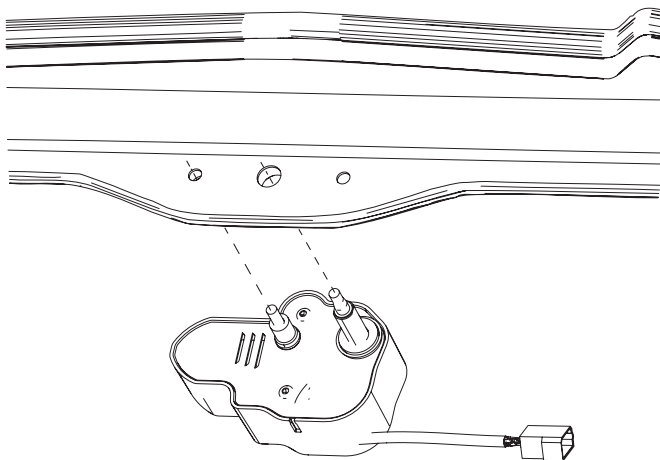


2. Fit a small cupped washer, small rubber washer and the small spacer over the mounting stud.
3. Fit a large cupped washer and a large rubber washer over the motor spindle as shown.

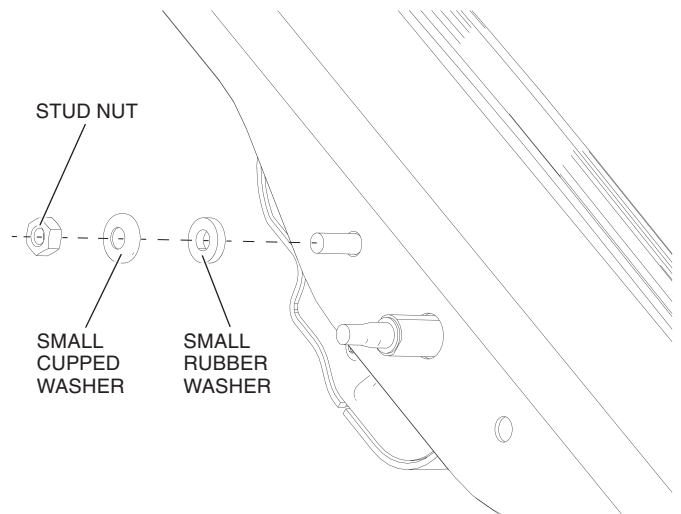
NOTE: For windshields without a built-in spacer in the center mounting hole, fit the large spacer over the motor spindle after the rubber washer.



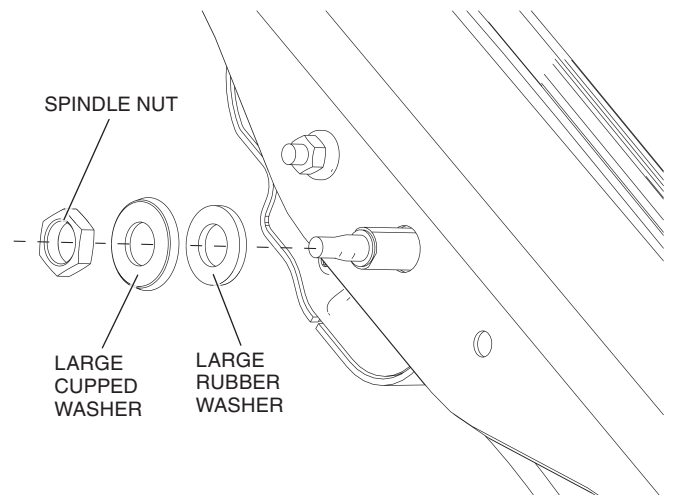
4. Insert the motor into the windshield such that the motor spindle fits through the center hole and the mounting stud fits through the right-most hole when viewed from inside.



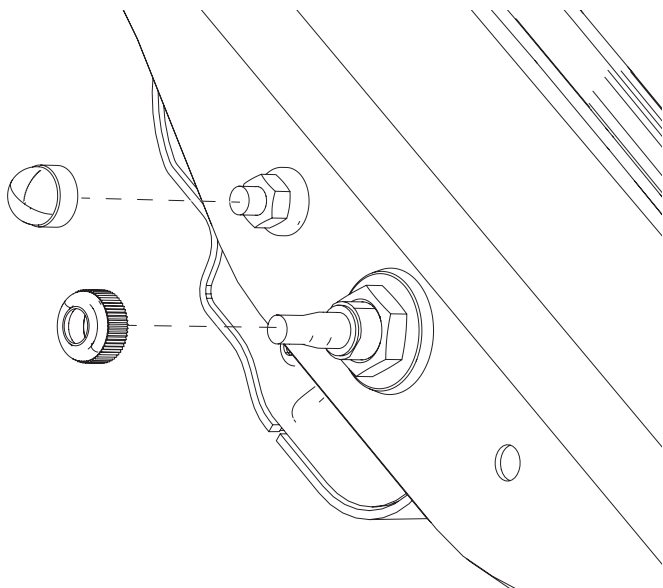
5. Fit a small rubber washer and small cupped washer over the mounting stud then fasten the stud nut to the mounting stud to hold the motor in place.



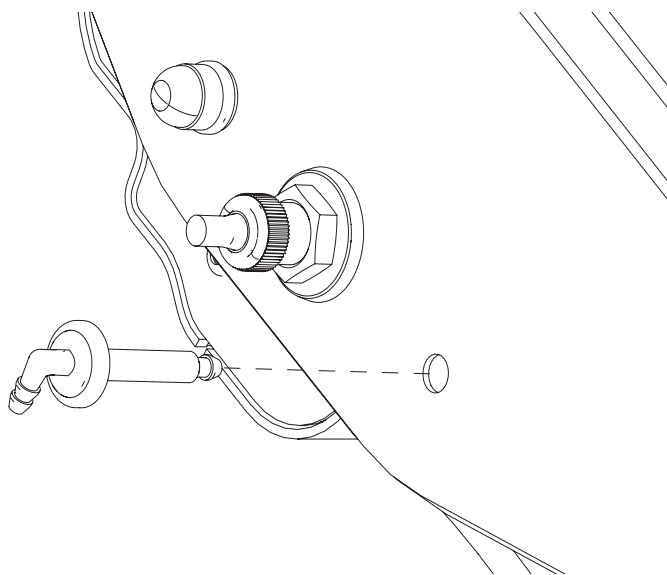
6. Fit a large rubber washer and large cupped washer over the motor spindle then fasten the large spindle nut to secure the motor.



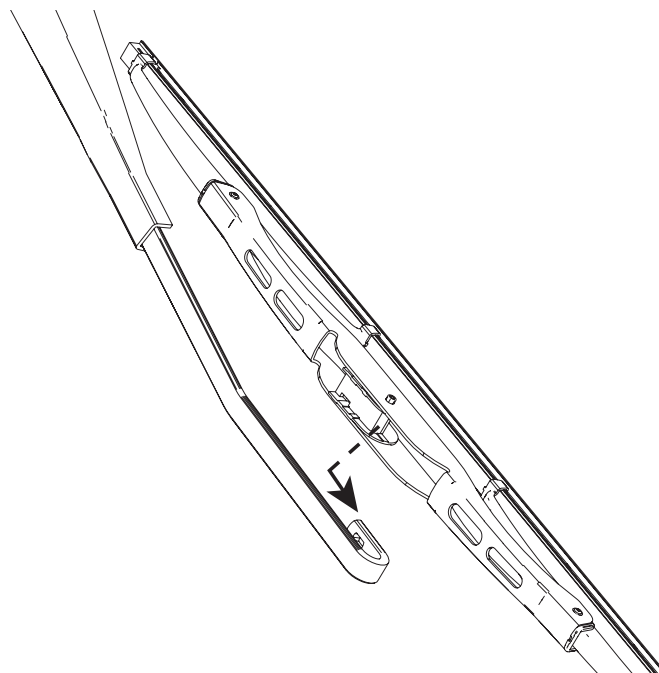
7. Fasten the spindle cap over the motor spindle and the stud cap over the mounting stud as shown.



8. Insert the elbow connector into the left-most hole in the windshield and secure with the included nut.

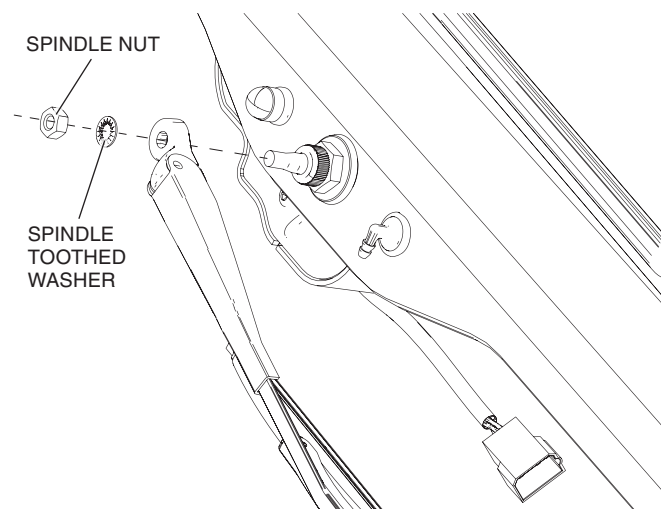


9. Hook the wiper blade into the wiper arm as shown.

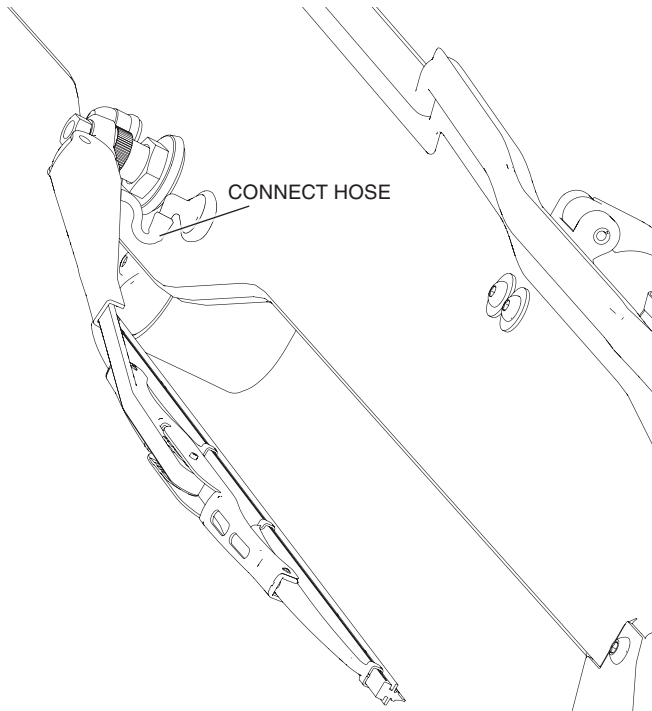


10. Fit the wiper arm over the motor spindle parallel to the top left side of the windshield.

11. Fit the spindle toothed washer over the motor spindle then fasten the small spindle nut to secure the wiper arm in place as shown.

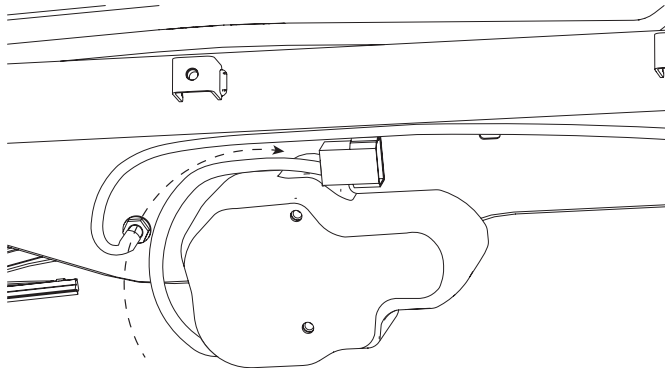


- Connect the wiper hose from the wiper arm to the elbow connector.



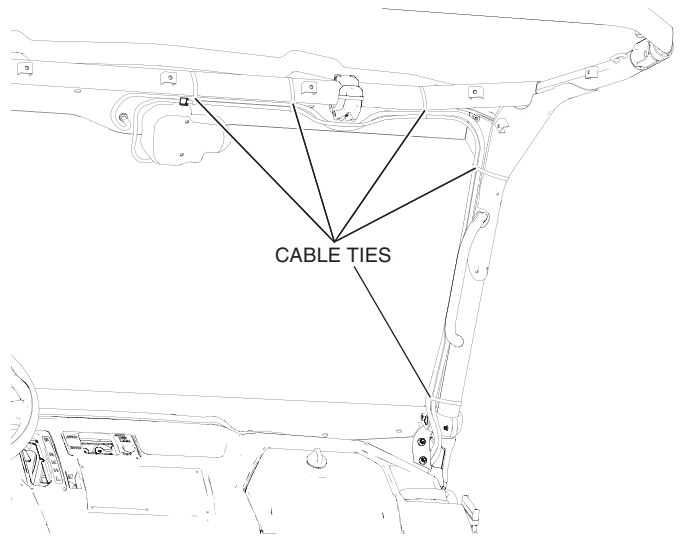
WIRING/FLUID CONNECTIONS

- Connect the washer hose to the inside of the elbow connector and route the hose over the top of the wiper motor.
- Route the motor wiring harness over the top of the wiper motor next to the washer hose as shown.

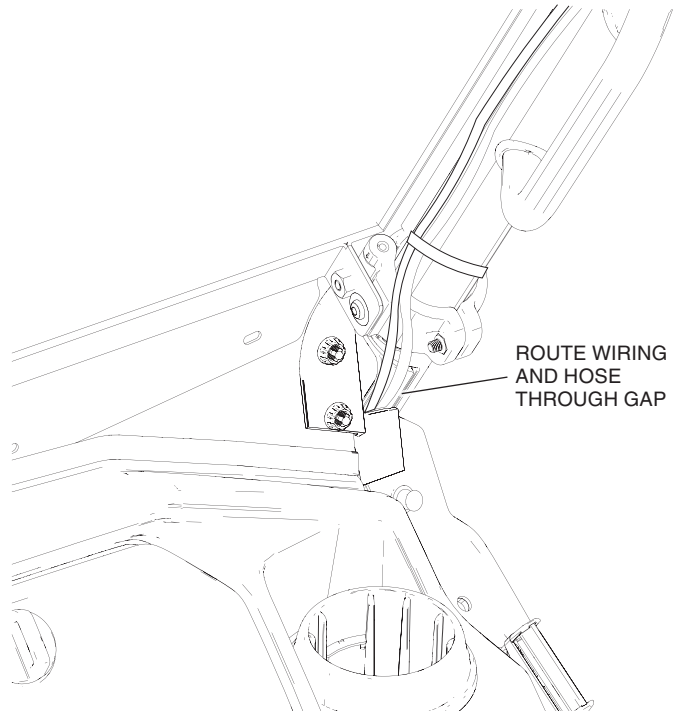


- Fasten the wiring harness and washer hose to the top bar of the OPS using a cable tie.
- Connect the washer/wiper wiring harness to the motor wiring harness.
- Run the washer/wiper wiring harness and washer hose along the top bar of the OPS over to the upper right corner, then down the right side of the vehicle as shown.

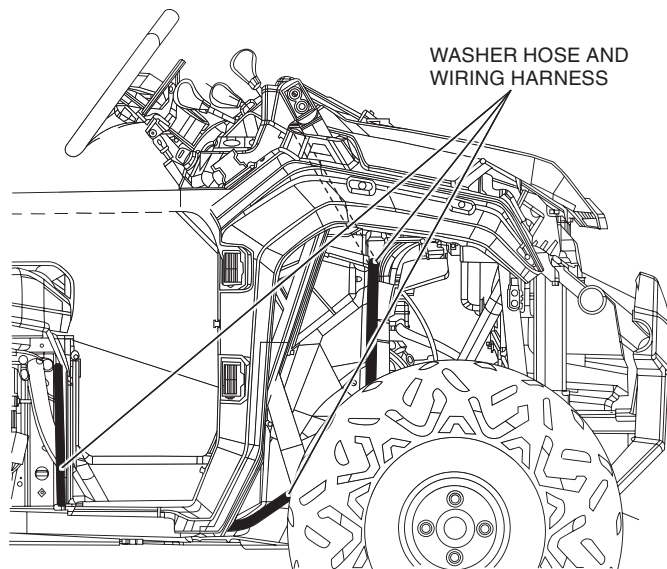
- Fasten the wiring harness and washer hose to the OPS using cable ties in the locations shown.



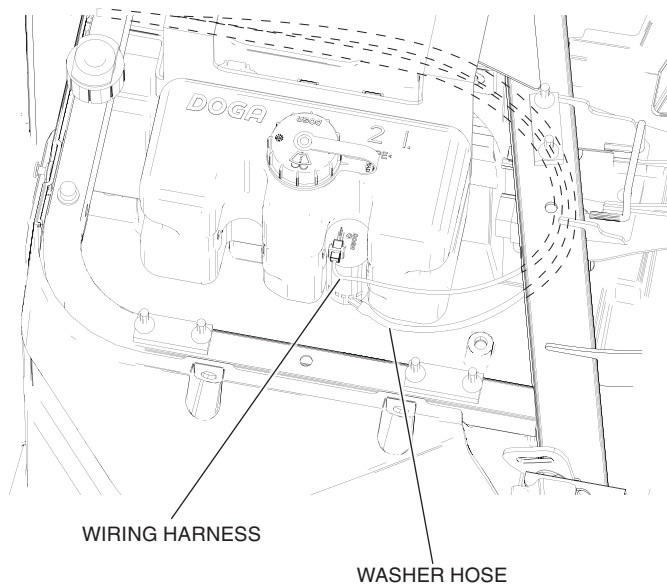
- Run the wiring harness and washer hose into the gap in the side of the vehicle and under the hood to the fuse box.



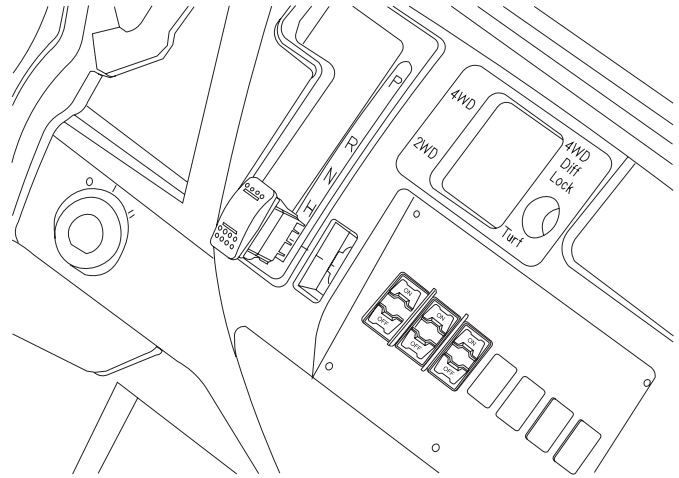
8. Connect the central connector of the wiring harness to the fuse box.
9. Run the washer hose and wiring harness underneath the vehicle to the driver side seat and up to the washer tank.



10. Connect the wiring harness and washer hose to the washer tank motor as shown.



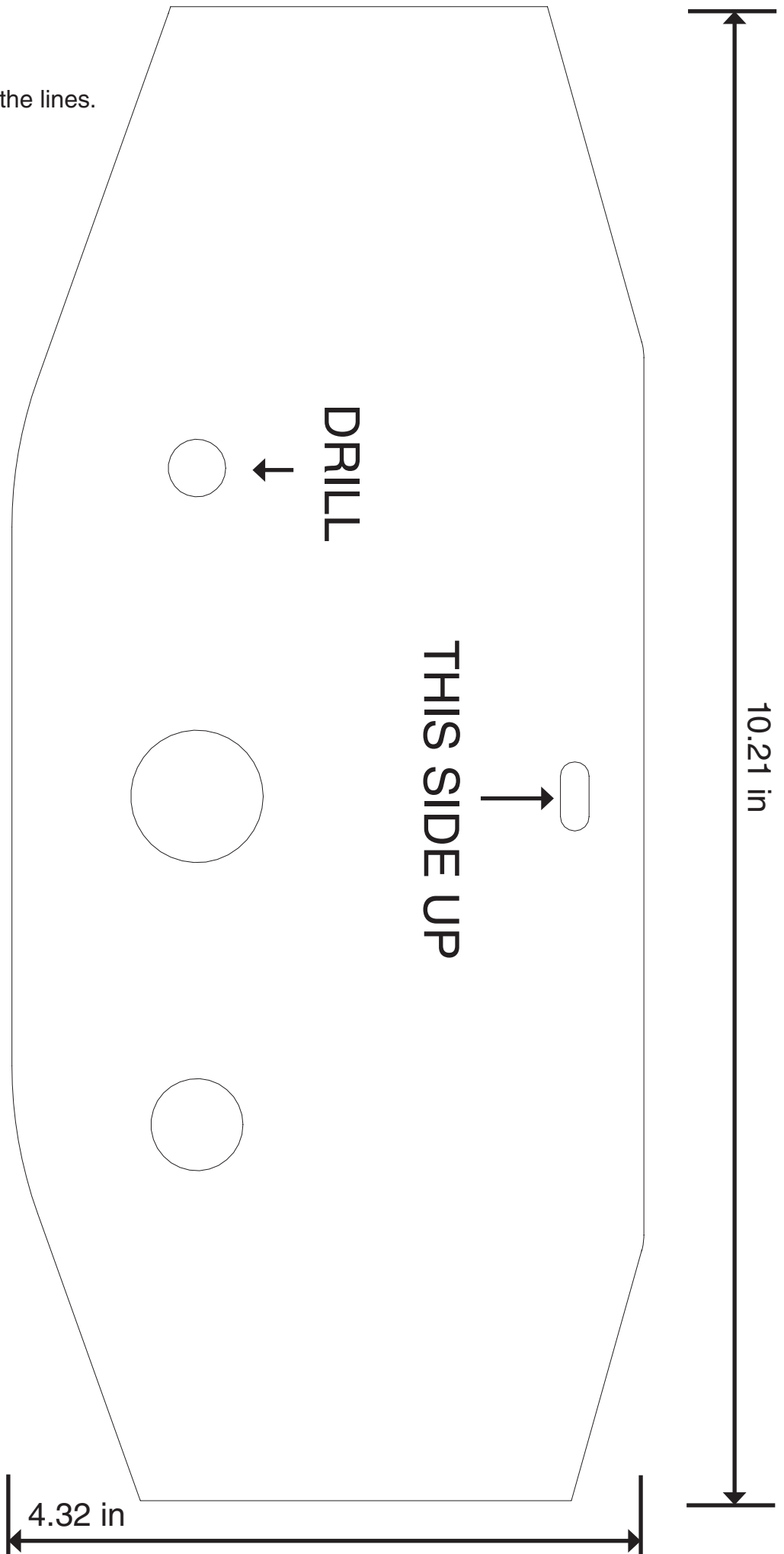
11. Insert the switch into the switch plate of the vehicle.

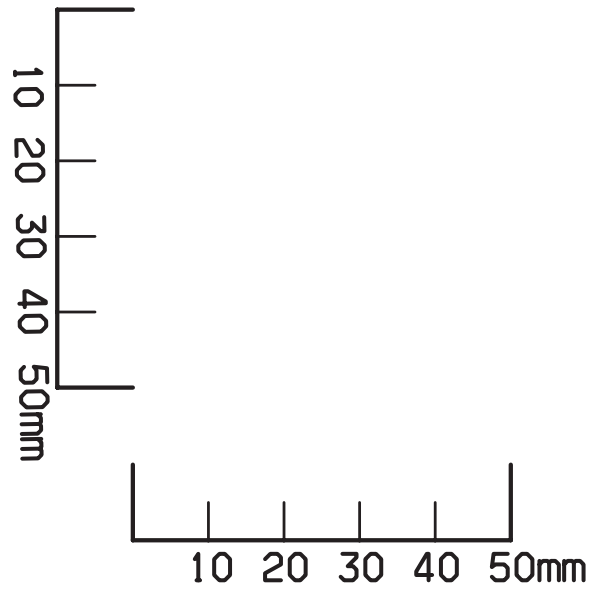


12. Test the function of the washer/wiper using the switch.
 - Down: Off
 - Up: Wiper On
 - Press and Hold Up: Wiper and Washer On.

DRILL TEMPLATE

Cut template along the lines.





NOTICE	
If you print this template from your local computer, make sure the printer settings do not “scale” or “shrink” the page.	